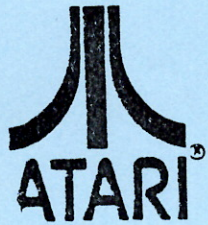


*Handwritten signature*

# ATARI

## 1027™ PRINTER FIELD SERVICE MANUAL



FD100670  
REV. 01  
October 1983



COPYRIGHT © 1983 BY ATARI, INC. ALL RIGHTS RESERVED

No part of this publication may be reproduced by any mechanical, photographic, or electronic process, or in the form of a phonographic recording, nor may it be stored in a retrieval system, transmitted, or otherwise copied for public or private use, without permission from ATARI, Inc.

Published By:  
Atari, Inc.  
1265 Borregas Avenue  
P. O. Box 427  
Sunnyvale, California 94086  
U.S. America

ATARI  
1027™ PRINTER  
FIELD SERVICE MANUAL

Atari believes that the information described in this manual is accurate and reliable, and much care has been taken in its preparation. However, no responsibility, financial or otherwise, shall be accepted for any consequences arising out of the use of this material. Information contained herein is subject to change. Revisions may be issued to advise of such changes and/or additions.

Correspondence regarding this document should be forwarded to Director of Technical Support, Consumer Product Service, Atari, Incorporated, 845 W. Maude Avenue, Sunnyvale, CA 94086.



## TABLE OF CONTENTS

<u>Section</u>	<u>Title</u>	<u>Page</u>
	INTRODUCTION	v
1	THEORY OF OPERATION	1-1
	Overview	1-1
	User Interface	1-3
	Mechanical	1-4
	Case	1-4
	Type Selection	1-7
	Type Wheel Movement	1-7
	Hammer Movement	1-7
	Hammer Strike	1-7
	Paper Feed	1-7
	Character Sensing	1-7
	Type Wheel Home Position Sensing	1-7
	Hammer Home Position Sensing	1-8
	Ink Roll Mechanism	1-8
	Manual Knob and Paper Lock/ Release Lever	1-8
	Electronic	1-8
	Power Supply Circuit	1-8
	Microprocessor 8049 (MPU)	1-9
	Interface Circuits	1-9
	Wheel, Hammer Motor Drive Circuit	1-9
	Hammer Select Solenoid Drive Circuit	1-9
	Character Select Solenoid Drive Circuit	1-10
	DC Motor Drive Circuit	1-10
	Sensor Signal Circuit	1-10
	Power-on Reset Circuit	1-10
	Oscillator Circuit	1-10
2	TESTING	2-1
	Equipment Required	2-1
	Diagnostic Procedure	2-1
	Setting up the 1027 for testing and using CPS Diagnostic Diskette with the file T1027.BAS	2-1
	Test for Character Skew	2-5
3	DISASSEMBLY/ASSEMBLY	3-1
4	SYMPTOM CHECKLIST	4-1
5	DRAWINGS AND PARTS LIST	5-1
6	SERVICE BULLETINS	6-1

## LIST OF ILLUSTRATIONS

<u>Figure</u>	<u>Title</u>	<u>Page</u>
1-1	1027 Printer Block Diagram	1-2
1-2	1027 Printer Controls/Indicators	1-3
1-3	1027 Printer Back View	1-4
1-4	1027 Printer Final Assembly	1-5
1-5	1027 Printer Mechanical Assembly	1-6
1-6	Power Supply Circuit	1-9
2-1	All Function Test Printout	2-3
2-2	Standard Character Set	2-3
2-3	International Character Set	2-4
2-4	Standard Character Set With Underline	2-4
2-5	Direction Print Check	2-4
2-6	Character Skew Printout	2-6
5-1	1027 Printer Schematic	5-3
5-2	1027 Printer Silkscreen	5-5
5-3	1027 Printer Final Assembly	5-7
5-4	1027 Printer Mechanical Assembly	5-9

## LIST OF TABLES

<u>Table</u>	<u>Title</u>	<u>Page</u>
4-1	Diagnostic Table	4-3



## INTRODUCTION

The Atari 1027<sup>TM</sup> Printer Field Service Manual is a reference guide for the service technician. The information presented in this manual, when used in conjunction with Atari training, enables you to repair and maintain the 1027 Printer.

This Field Service Manual is organized in six sections:

- **THEORY OF OPERATION** - Overview of how the 1027 Printer works and what its basic assemblies look like.
- **TESTING** - Review of tests available for diagnosing 1027 Printer problems.
- **DISASSEMBLY/ASSEMBLY** - Procedures for disassembling and assembling the 1027 Printer.
- **SYMPTOM CHECKLIST** - Failure information to aid in diagnosing 1027 Printer problems.
- **DRAWINGS AND PARTS LIST** - Silkscreen, schematic, assembly drawings and a breakdown of parts used to repair the 1027 Printer.
- **SERVICE BULLETINS** - Section to be used to hold Field Change Orders, Upgrade Bulletins and Tech Tips.





## SECTION 1

### THEORY OF OPERATION

#### OVERVIEW

The ATARI 1027™ Printer is a letter quality impact printer that averages 10 characters per second. It is a hard copy output peripheral intended for use under the control of the ATARI 400™, 800™, 600XL™ or 1200XL™ computer. It connects directly to the SIO peripheral port of the computer (no interface is required). The printer mechanism is a type wheel assembly. All firmware is resident in the printer and executed by an on-board microprocessor which controls the functions of the printer.

Figure 1-1 is a block diagram of the functional flow of the 1027.

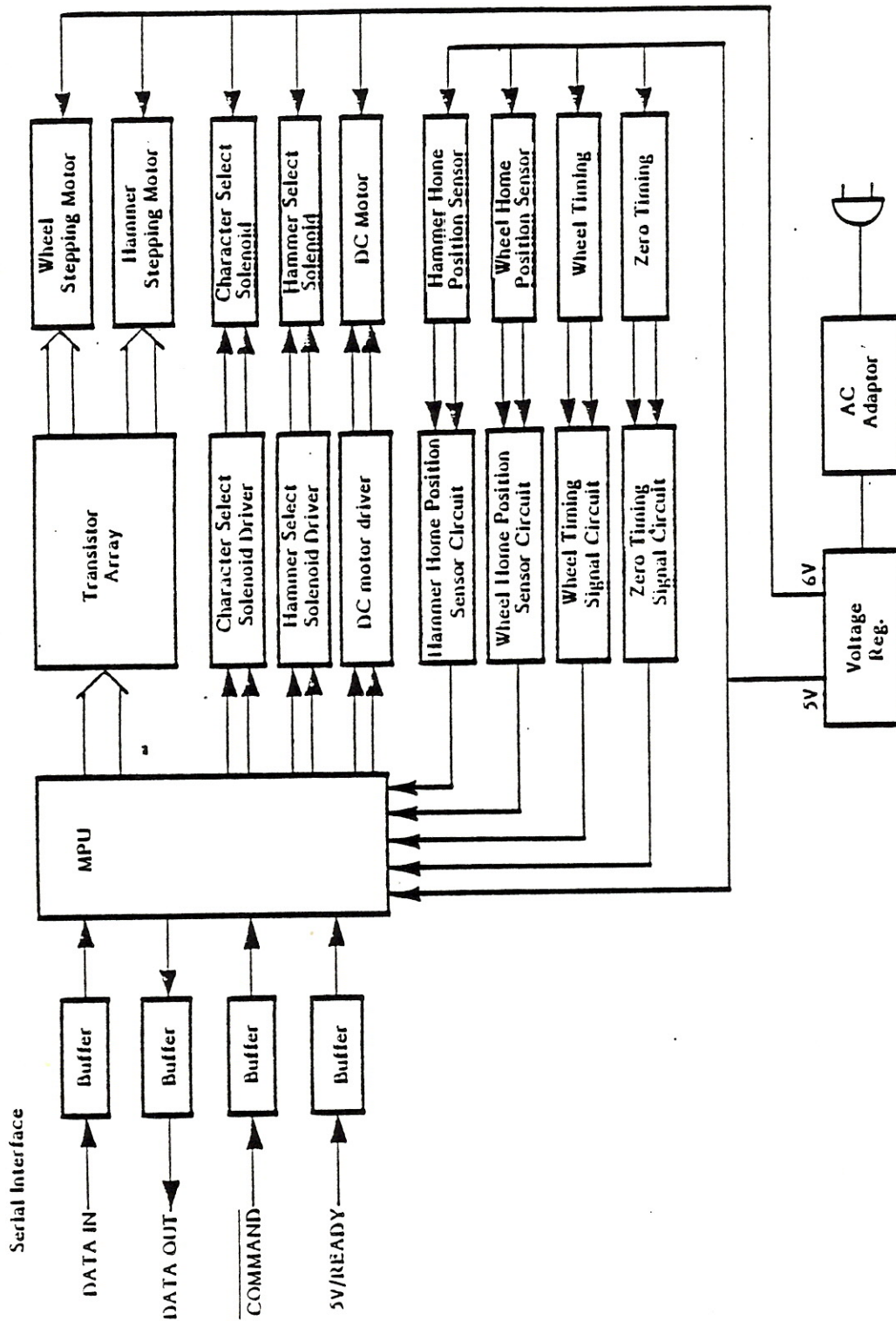


Figure 1-1. 1027 Printer Block Diagram



## USER INTERFACE

Figure 1-2 shows the location of the Controls/Indicators.

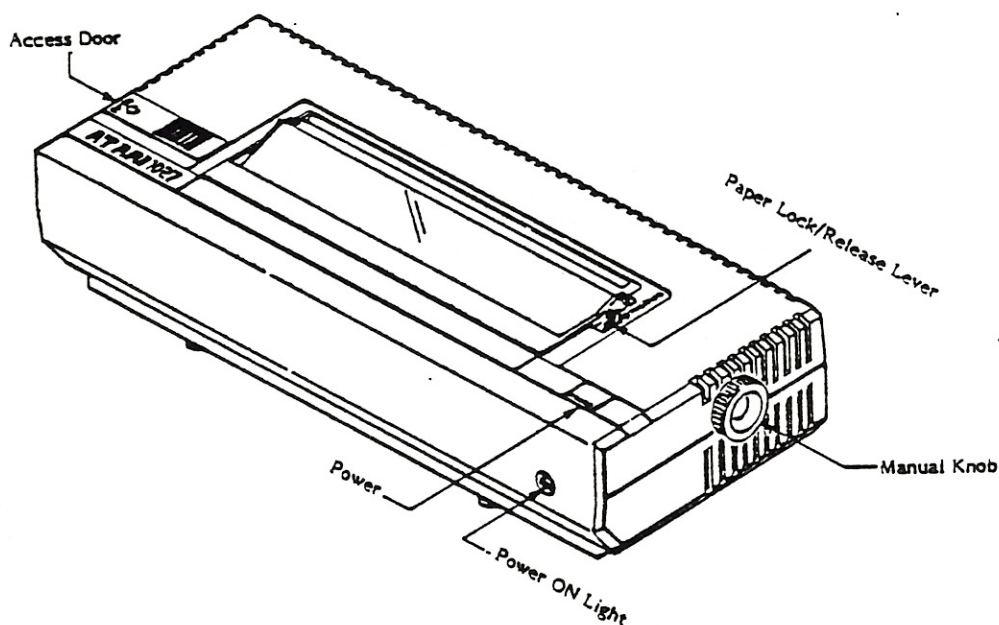


Figure 1-2. 1027 Printer Controls/Indicators

The Controls/Indicators and their functions are:

**Access Door** - Allows access to the plastic gears for lubrication.

**Paper Lock/Release Lever** - When this lever is moved back (direction of arrow) the paper chute opens to allow insertion of paper. When this lever is moved forward, there is pressure against the platen and paper is fed.

**POWER** - The microprocessor is reset when the **POWER** button is pressed.

**Power-on Light** - The LED indicates that power to the unit is ON.

**Manual Knob** - Turn the manual knob to move and position the paper in the printer.

The back panel contains the Power Input Jack and two Input/Output (I/O) connectors (See Figure 1-3).

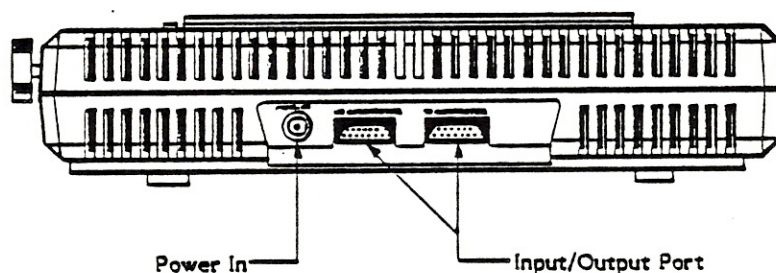


Figure 1-3. 1027 Printer Back View

### Mechanical

This section describes the mechanical characteristics of the 1027 Printer. For an overall understanding of the 1027 printer operation, read both this section and the Electronic Section which follows the mechanical. Use Figure 1-4 and Figure 1-5 as reference for the following discussion.

### Case

The outer case is composed of four pieces of plastic. The pieces are: 1) the upper case; 2) the lower case; 3) the bezel; and, 4) the cover.

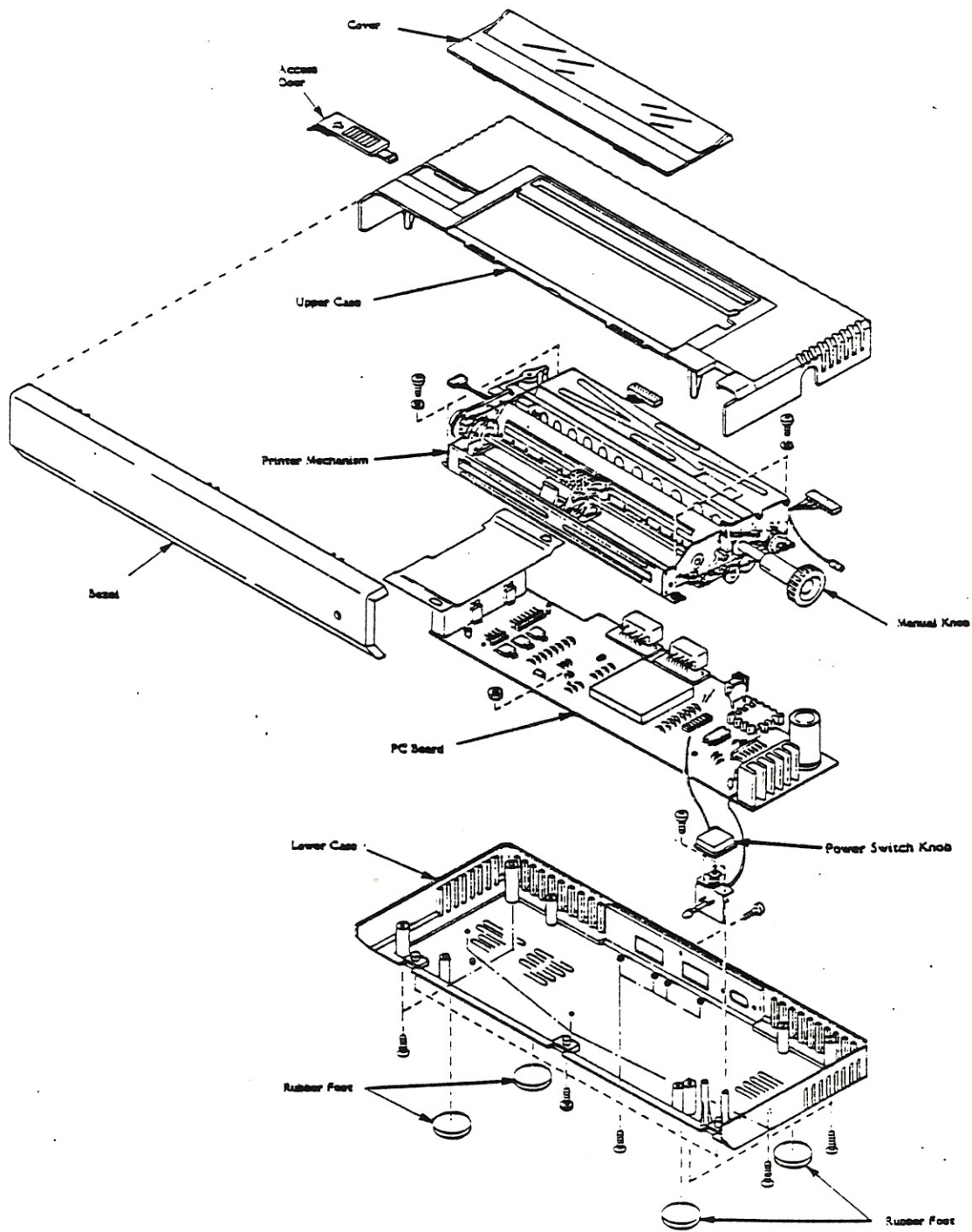
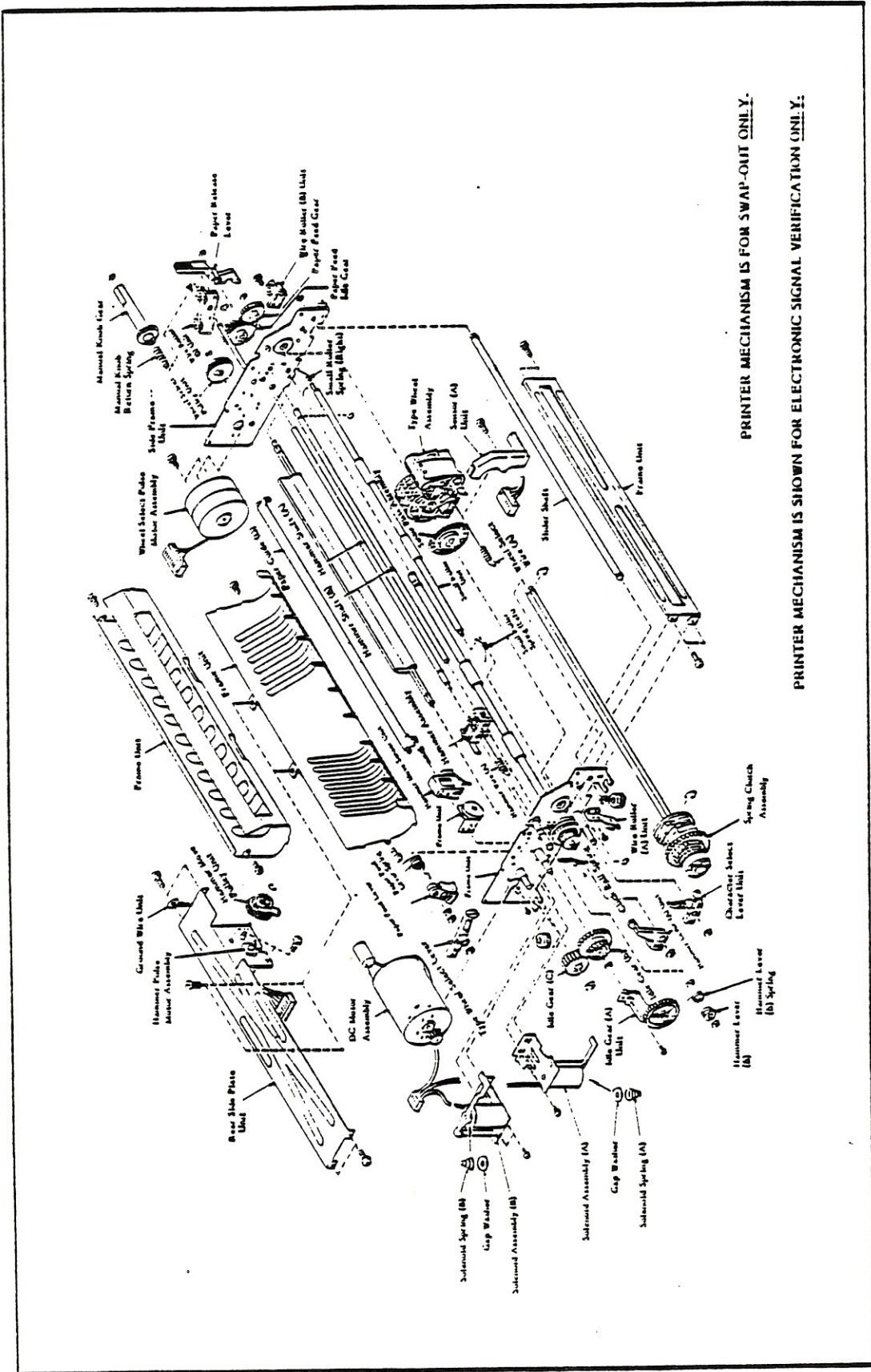


Figure 1-4. 1027 Printer Final Assembly





PRINTER MECHANISM IS FOR SWAP-OUT ONLY.

PRINTER MECHANISM IS SHOWN FOR ELECTRONIC SIGNAL VERIFICATION ONLY.

Atari 1027 Printer  
Field Service Manual

Figure 1-5. 1027 Printer Mechanical Assembly  
1-6

**\*\*MECHANICAL REFERENCES MADE HERE ARE FOR ELECTRONIC VERIFICATION ONLY.\*\***

### Type Selection

The DC motor drives the main gear (on the spring clutch assembly) via the idle gear to rotate the type wheel shaft and the type wheel assembly. When the desired type comes into position facing the hammer, Solenoid A is turned on and the type wheel select lever stops the type wheel shaft.

### Type Wheel Movement

The wheel select pulse motor assembly is linked to the type wheel assembly by a wire via the wheel select pulley assembly to move the wheel back and forth along the type wheel shaft.

### Hammer Movement

The hammer pulse motor assembly is linked to the hammer assembly by a wire via the hammer move pulley assembly to move the hammer assembly back and forth along the hammer shaft.

### Hammer Strike

The DC motor rotates the type wheel shaft via the idle gear which rotates the cam attached to the type wheel shaft, hammer lever (A) and hammer lever (B) to strike the hammer.

### Paper Feed

The DC motor rotates the type wheel shaft via the idle gear, which rotates the cam attached to the type wheel shaft, the paper feed lever and the rubber roller linked to the lever to feed paper.

Paper is fed only when the concave part of the timing cam and the convex part of the paper feed lever face each other (blank type is selected).

### Character Sensing

The type and the reference position of each type are detected by the photosensor (sensor (A) unit)\* through the sensor plate assembly mounted on the same shaft as the type wheel.

### Type Wheel Home Position Sensing

The home position of the type wheel is detected by the photosensor (sensor (A) unit)\* through the sensor plate assembly mounted on the type wheel.

\*Sensor (A) contains more than one photosensor.

### Hammer Home Position Sensing

The home position of the hammer assembly is detected by the photosensor as the shutter plate mounted on the hammer assembly moves into and out of the sensor.

### Ink Roll Mechanism

The ink roll manually snaps onto the plastic post in front of and parallel to the type wheel.

### Manual Knob and Paper Lock/Release Lever

When the manual knob is pushed in and turned clockwise it rotates the rubber roller (which is gear-linked to the manual knob) to feed paper forward. Counter-clockwise rotation feeds the paper in the reverse direction.

When the paper lock/release lever is moved back (direction of arrow), the paper chute opens to allow insertion of paper. When this lever is moved forward, the friction roller presses against the platen and paper is fed.

## ELECTRONIC

The 1027 Printer electronics consists of 10 elements which are discussed in the following paragraphs:

- the Power Supply Circuit
- the Microprocessor 8049 (MPU)
- the Interface Circuits
- the Wheel, Hammer Motor Drive Circuit
- the Hammer Select Solenoid Drive Circuit
- the Character Select Solenoid Drive Circuit
- the DC Motor Drive Circuit
- the Sensor Signal Circuit
- the Power ON Reset Circuit
- the Oscillator Circuit

### Power Supply Circuit

The main power supply is an external AC Adaptor rated at 9.5V @ 40VA. Regulated outputs are obtained through a 3-terminal regulator in the main unit.

The power supply system consists of:

Vc 5V +/- 5% for the logic circuit and for the sensor circuit.

Vp 6V +/- 10% for driving the pulse motors, DC motor and solenoids



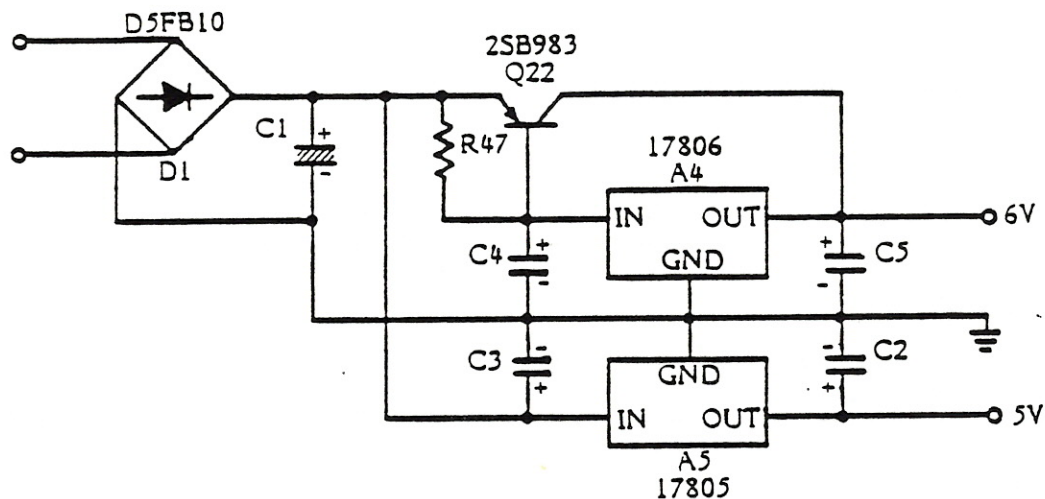


Figure 1-6. Power Supply Circuit

### Microprocessor 8049 (MPU)

The MPU is an N-MOS custom microprocessor with a built-in 2K ROM, a 128-byte RAM and a clock circuit. Most of the IC pins are used as I/O ports.

### Interface Circuits

The unit uses a serial interface. The serial port consists of a serial DATA OUT (transmission) line, a serial DATA IN (receiver) line and other miscellaneous control lines.

### Wheel, Hammer Motor Drive Circuit

The transistor array LB1259 has active high inputs in the equivalent circuit. The wheel select pulse motor and the hammer pulse motor are stepper motors driven by 2 - phase excitation. Clock pulses to the motor are approximately 5 msec.

### Hammer Select Solenoid Drive Circuit

Solenoid B, the hammer select solenoid, is controlled by a single pulse input of approximately 10 msec from P21 (pin 22) of the MPU.

### Character Select Solenoid Drive Circuit

Solenoid A, the character select solenoid, is controlled by a single pulse input of approximately 3 msec. from P20 (pin 21) of the MPU.

The character select signal goes High at the rising edge of wheel timing and goes Low after approximately 3 msec of the next rising edge of wheel timing.

### DC Motor Drive Circuit

While the signal is Low at P22 (pin 23) of the MPU, the DC motor keeps rotating.

### Sensor Signal Circuit

The sensor of this circuit consists of a photo diode and a phototransistor. The circuit composed of the buffer and two resistors (10K, 22K) is a Schmitt trigger circuit.

### Power ON Reset Circuit

When the printer power switch is turned on, the MPU is reset by the power ON reset circuit. At power ON, the capacitor is charged to give a Low signal to the MPU RST (pin 4) terminal for a moment. After approximately 100msec. the RST terminal goes High.

### Oscillator Circuit

The MPU uses an external quartz oscillator which determines the operation frequency. The oscillation frequency is 6MHz +/- 0.3%.

## SECTION 2

### TESTING

#### Equipment Required

- An Atari Computer and accessories
- A BASIC language cartridge
- An Atari Disk Drive
- CPS Diagnostic Diskette with the file T1027.BAS (P/N FD100577, Rev. 02)
- A 15 MHz oscilloscope
- A Digital Voltmeter
- A precision screwdriver kit
- A Soldering Iron

#### Diagnostic Procedure

The testing procedures available for the 1027 are:

- CPS Diagnostic Diskette with the file T1027.BAS.
- A test for character skew which consists of a BASIC Program which you will type in.

CAUTIONS: USE ONLY GOOD QUALITY 8 1/2 X 11 STANDARD UNLINED PAPER.  
DO NOT USE ROLL PAPER.

DO NOT USE LABELS OR ANY ADHESIVE - BACKED MATERIAL.

NEVER PRINT WITHOUT PAPER IN THE PRINTER.

The following pages explain how to set up the 1027 for testing and contain procedures and sample printouts for each test.

#### Setting up the 1027 for testing and using CPS Diagnostic Diskette with the file T1027.BAS.

1. Connect the computer to the TV set as shown in the computer owner's manual.
2. Plug the 1027 into the power adaptor.
3. Plug an I/O cable into the computer and the 1027.
4. Connect the disk drive to the computer as shown in the owner's manual.
5. Power up the 1027 Printer. Wait for the printer to complete its initialization. During initialization the Type Wheel Assembly moves to the left end of the carriage, the Type Wheel Assembly rotates, then moves a short distance to the right and stops.
6. Power up the disk drive. Wait for the disk drive to complete its initialization.
7. Insert the CPS Diagnostic Diskette with the file T1027.BAS into the disk drive and close the door.



3. Insert the BASIC cartridge into the computer (if applicable).

NOTE: This program requires the use of BASIC to execute. Later model computers may have BASIC already installed.

9. Turn on the computer and TV set. Wait for the computer to complete its initialization. TV display should exhibit "READY" in white letters on a blue background.
10. Enter the command RUN "D1:T1027.BAS" and terminate with the RETURN key.
11. The program will now load and execute.
12. The following menu appears:

TEST FACILITY  
FOR THE  
1027 PRINTER  
REV. 2

- 1) ALL FUNCTION TEST
  - 2) STANDARD CHAR SET
  - 3) INTERNATIONAL CHAR SET
  - 4) UNDERLINE CHECK
  - 5) DIRECTION PRINT CHECK
  - 6) CARRIAGE RETURN LOOP
  - 7) HORIZONTAL STEP MOTOR LOOP
  - 8) SELECTIVE CHAR PRINT LOOP
  
  - Q) STOP TEST AND RETURN TO MENU
- PLEASE SELECT AN OPTION

Select 1) for the printout illustrated in Figure 2-1. This test runs continuously until Q is pressed to stop the test and return to the menu.

1027 PRINTER FUNCTION TEST, PASS # 1

STANDARD CHAR SET

```
!"#$%&'()*+,-./0123456789:;<=>?@ABCDEFGHIJKLMN OPQRSTUVWXYZ[\ ]_`abcdefghijklmnop  
qrstuvwxyz |
```

INTERNATIONAL CHAR SET

```
!"#$%&'()*+,-./0123456789:;<=>?@ABCDEFGHIJKLMN OPQRSTUVWXYZ[\ ]_`abcdefghijklmnop  
qrstuvwxyz |
```

STANDARD CHAR SET WITH UNDER-LINE

```
!"#$%&'()*+,-./0123456789:;<=>?@ABCDEFGHIJKLMN OPQRSTUVWXYZ[\ ]_`abcdefghijklmnop  
qrstuvwxyz |
```

DIRECTION PRINT CHECK

```
000000001111111122222222333333334444444455555555666666667777777788888888  
123456789C123456789C123456789C123456789C123456789C123456789C123456789C
```

END OF TEST

Figure 2-1. All Function Test Printout

Select 2) to print the standard character set. This option prints the standard character set except for CONTROL N and CONTROL O. This test runs continuously until Q is pressed to stop the test and return to the menu. Figure 2-2 illustrates the standard character set.

STANDARD CHAR SET

```
!"#$%&'()*+,-./0123456789:;<=>?@ABCDEFGHIJKLMN OPQRSTUVWXYZ[\ ]_`abcdefghijklmnop  
qrstuvwxyz |
```

Figure 2-2. Standard Character Set

Select 3) to print the International character set. This option prints the International character set except for CONTROL N and CONTROL O. This test runs continuously until Q is pressed to stop the test and return to the menu. Figure 2-3 illustrates the International character set.

INTERNATIONAL CHAR SET

```
áâñçöôîáíúâóúüäîíëëñëääÀ|+<=> !"#%&'()*+,-./0123456789:;<=>?@ABCDEFGHIJKLMNPOQR  
STUVWXYZ[\]_`abcdefghijklmnopqrstuvwxyzÄ|
```

Figure 2-3. International Character Set

Select 4) to print the standard character set with underline. This option prints the standard character set except for CONTROL N and CONTROL O. After each character is printed, it is underlined before the next character is printed. This test runs continuously until Q is pressed to stop the test and return to the menu. Figure 2-4 illustrates the standard character set with underline.

STANDARD CHAR SET WITH UNDER-LINE

```
! "#$%&'()*+,-./0123456789:;<=>?@ABCDEFGHIJKLMNPOQRSTUVWXYZ[\]_`abcdefghijklmnop  
qrstuvwxyz|
```

Figure 2-4. Standard Character Set With Underline

Select 5) for the Direction Print Check. This checks the ability of the Operating System to determine when the print buffer is full and to print the full length of the page in both directions. This test runs continuously until Q is pressed to stop the test and return to the menu. Figure 2-5 illustrates the Direction Print Check.

DIRECTION PRINT CHECK

```
0000000011111111112222222222333333333344444444445555555555666666666677777777778  
12345678901234567890123456789012345678901234567890123456789012345678901234567890
```

Figure 2-5. Direction Print Check

Select 6) to perform continuous carriage returns. This allows for scoping the carriage return logic, the wheel select pulse motor and the hammer pulse motor. Press Q to stop this test and return to the menu.

Select 7) to move the print head right then left continuously. This allows for the scoping of the wheel select pulse motor. Press Q to stop this test and return to the menu.



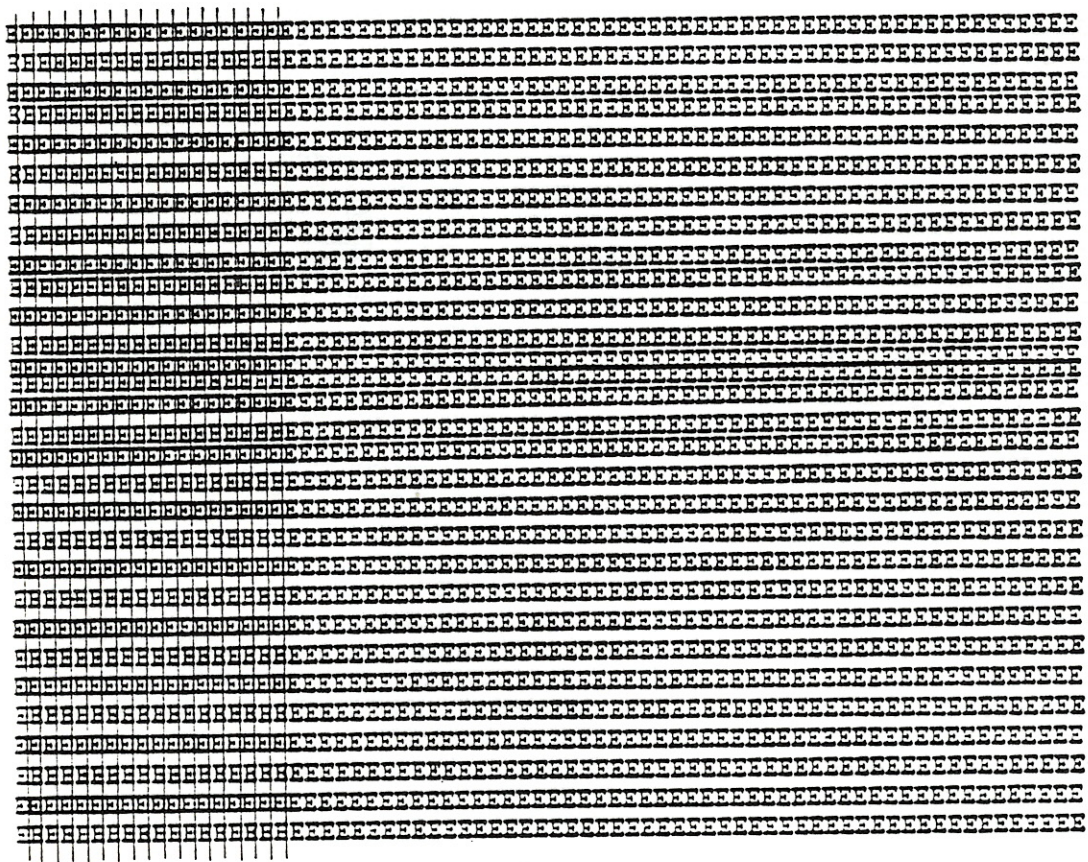


Figure 2-6. Character Skew Printout.  
(with vertical lines drawn)

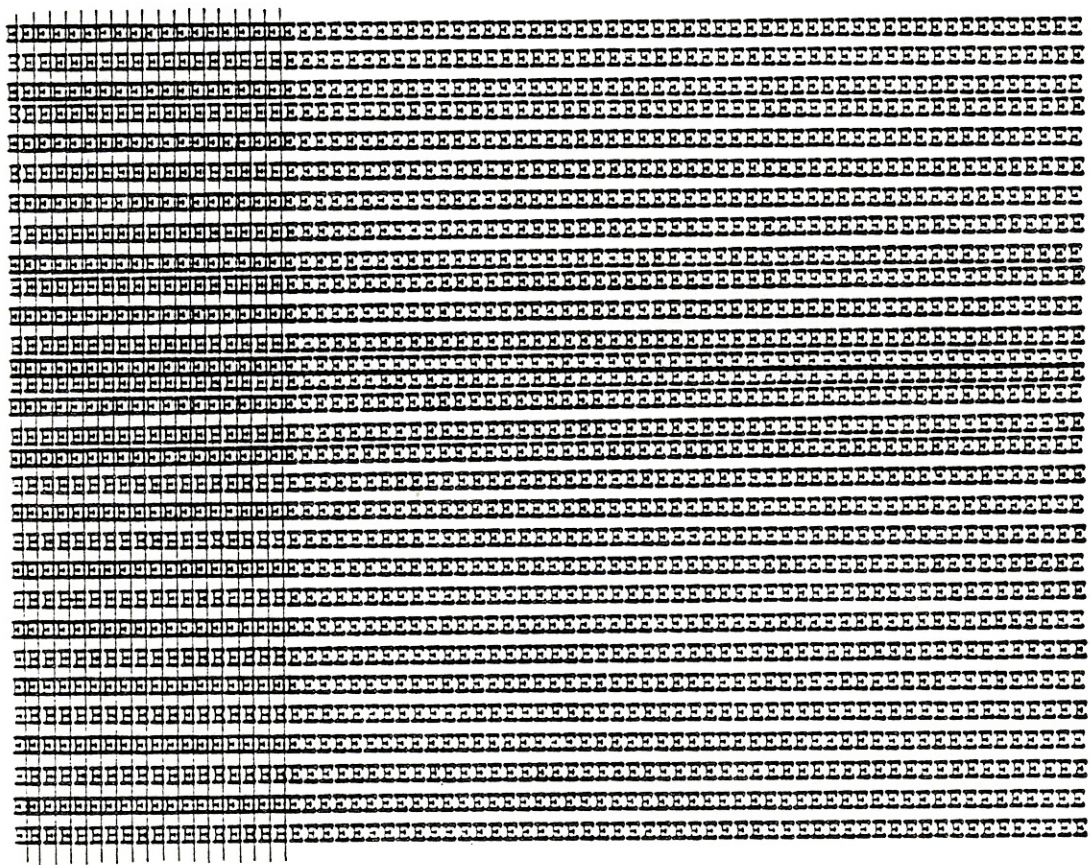


Figure 2-6. Character Skew Printout.  
(with vertical lines drawn)



## SECTION 3

### DISASSEMBLY/ASSEMBLY

#### Equipment Required:

- A precision screwdriver set

#### Preventive Maintenance

Each Atari 1027 Printer which is disassembled must have the following Preventive Maintenance performed:

- Carefully clean any dust or dirt from inside the unit - use a dry, soft cloth.
- Use alcohol or benzene to remove any stains. DO NOT USE thinner, trichloroethylene or ketone solvents - they may damage the plastic parts.

CAUTIONS: NEVER OIL OR CLEAN THE TYPE WHEEL ASSEMBLY. IT IS MADE OF RUBBER AND MAY BE DAMAGED.

DO NOT TOUCH THE TYPE WHEEL SHAFT - ACID FROM YOUR HANDS CAN CAUSE OXIDATION.

DO NOT USE ROLL PAPER. USE ONLY GOOD QUALITY 8 1/2 BY 11 STANDARD UNLINED PAPER. INSERT ONE SHEET AT A TIME. ANY OTHER SIZE OR TYPE OF PAPER MAY RESULT IN THE PRINTER JAMMING AND DAMAGE TO THE TYPE WHEEL ASSEMBLY.

DO NOT USE LABELS OR ANY ADHESIVE - BACKED MATERIAL.



Use Figure 5-3 (Page 5-7) and Figure 5-4 (Page 5-9) as reference for this section.

#### Disassembly

- Remove the cover.
- Turn the unit upside down and remove the four screws holding the lower case in place.
- Remove the three screws holding the bezel to the lower case.
- Remove the screw located between the Input/Output (I/O) ports.
- Turn the unit over.
- Remove the bezel and lower case.
- Remove the four screws holding the printer mechanism to the bottom cover.
- Lift up the printer mechanism and unplug connectors 1,2, and 3 from the PC Board.
- If necessary, lift off the RF Shield Top.

#### Assembly

- Plug connectors 1, 2 and 3 into the PC Board.
- Replace RF shield top if it has been removed.
- Set the printer mechanism in the lower case, positioning it over the four lower case screw holes.
- Insert and tighten the four lower case screws.
- Fit the upper case on the lower case.
- Slide the bezel onto the front of the unit - align the LED with the opening in the bezel; slide the three tabs into the lower case; hook the top tabs into the upper case.
- Carefully turn the unit over while holding the two cases and bezel together.
- Insert and tighten the four screws holding the lower case in place.
- Insert and tighten the three screws holding the bezel to the lower case.
- Insert and tighten the screw located between the Input/Output (I/O) ports.
- Replace the cover.

## SECTION 4

### SYMPTOM CHECKLIST

#### DOES NOT PRINT CHARACTERS

<u>Symptom</u>	<u>Possible Cause</u>	<u>Repair Method</u>
Hammer Pulse Motor Assembly, Wheel Select Pulse Motor Assembly, DC Motor and Solenoid Assembly operate normally but no printing is done.	Ink Roll is not mounted properly, ink is exhausted.	Mount Ink Roll properly or replace the Ink Roll.
Hammer Pulse Motor Assembly does not move properly.	Foreign matter has accumulated between gears.  Hammer Pulse Motor Assembly lead wire is cut.	Rotate the pulley gear by hand and remove foreign matter.  Repair, if possible. Is there current to each phase of the motor (See Pg 4-3)? If yes, replace printer mechanism. If none, troubleshoot and repair.
Wheel Select Pulse Motor Assembly does not move properly.	Wheel Select Pulse Motor Assembly lead wire is cut.	Repair if possible. Is there current to each phase of the motor (See Pg 4-3)? If yes, replace printer mechanism. If none, troubleshoot, and repair.
DC motor does not rotate.	Foreign matter has accumulated between gears.  DC Motor Lead wire is cut.  Solenoid lead wire is cut.	Rotate the pulley gear by hand and remove foreign matter.  Repair if possible. Is there current to the motor (See Pg 4-3)? If yes, replace printer mechanism. If none, troubleshoot and repair.  Repair if possible. Is there current to the Solenoid (See Pg 4-3)? If yes, replace printer mechanism. If none, troubleshoot and repair.

## SECTION 4

### SYMPTOM CHECKLIST

#### DOES NOT PRINT CHARACTERS

<u>Symptom</u>	<u>Possible Cause</u>	<u>Repair Method</u>
Hammer Pulse Motor Assembly, Wheel Select Pulse Motor Assembly, DC Motor and Solenoid Assembly operate normally but no printing is done.	Ink Roll is not mounted properly, ink is exhausted.	Mount Ink Roll properly or replace the Ink Roll.
Hammer Pulse Motor Assembly does not move properly.	Foreign matter has accumulated between gears.	Rotate the pulley gear by hand and remove foreign matter.
	Hammer Pulse Motor Assembly lead wire is cut.	Repair, if possible. Is there current to each phase of the motor (See Pg 4-3)? If yes, replace printer mechanism. If none, troubleshoot and repair.
Wheel Select Pulse Motor Assembly does not move properly.	Wheel Select Pulse Motor Assembly lead wire is cut.	Repair if possible. Is there current to each phase of the motor (See Pg 4-3)? If yes, replace printer mechanism. If none, troubleshoot, and repair.
DC motor does not rotate.	Foreign matter has accumulated between gears.	Rotate the pulley gear by hand and remove foreign matter.
	DC Motor Lead wire is cut.	Repair if possible. Is there current to the motor (See Pg 4-3)? If yes, replace printer mechanism. If none, troubleshoot and repair.
	Solenoid lead wire is cut.	Repair if possible. Is there current to the Solenoid (See Pg 4-3)? If yes, replace printer mechanism. If none, troubleshoot and repair.



TABLE 4-1  
DIAGNOSTIC TABLE

Printer Mechanism Component Used	Diagnostic Option to Activate Signal	Where to Look For Signals
WA (Wheel Select Lead) WB (Wheel Select Lead) WC (Wheel Select Lead) WD (Wheel Select Lead)	P U L S E  M T R  1	Connector 1 Pins 9,10,11,12
HA (Hammer Select Lead) HB (Hammer Select Lead) HC (Hammer Select Lead) HD (Hammer Select Lead)	P U L S E  M T R  2	Connector 1 Pins 3,4,5 and 6
MT (DC Motor)	Use Option # 8	Connector 2, Pin 2
HS (Hammer Select Solenoid) Solenoid B	Use Option # 5	Connector 2, Pin 4
CS (Character Select Solenoid) Solenoid A	Use Option # 5	Connector 2, Pin 6
WT (Wheel Timing)	Use Option # 8	Connector 3, Pin 4
ZT (Zero Timing Sensor)	Use Options #1,#2,#3	Connector 3, Pin 2
HHP (Hammer Home Position)	Use Option # 7	Connector 3, Pin 9
WHP (Wheel Home Position)	Use Option # 7	Connector 3, Pin 6



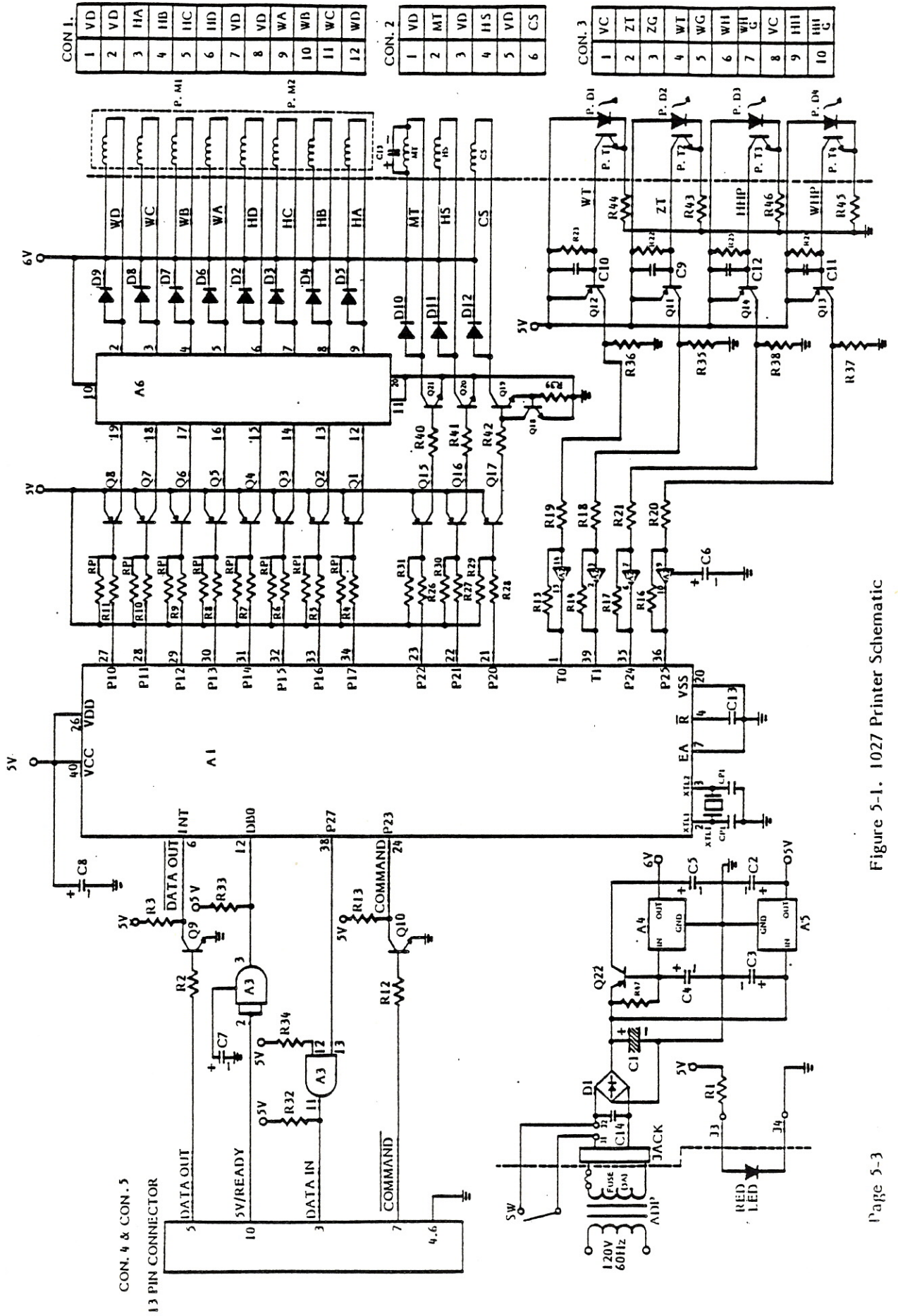
## SECTION 5

### DRAWINGS AND PARTS LIST

Attached to the front cover are representative silkscreens and schematics for the 1027 Printer. Remove them and place them in this section. Minor variations in design may be encountered depending on the production date of the unit, but these schematics provide all details required for an in-depth understanding of all 1027 Printer units.







CON. 1.

1	VD
2	VD
3	HA
4	HIB
5	HIC
6	HID
7	VD
8	VD
9	WA
10	WB
11	WC
12	WD

CON. 2

1	VD
2	MT
3	VD
4	HIS
5	VD
6	CS

CON. 3

1	VC
2	ZT
3	ZG
4	WT
5	WG
6	WH
7	WI
8	VC
9	HII
10	HIG

Figure 5-1. 1027 Printer Schematic

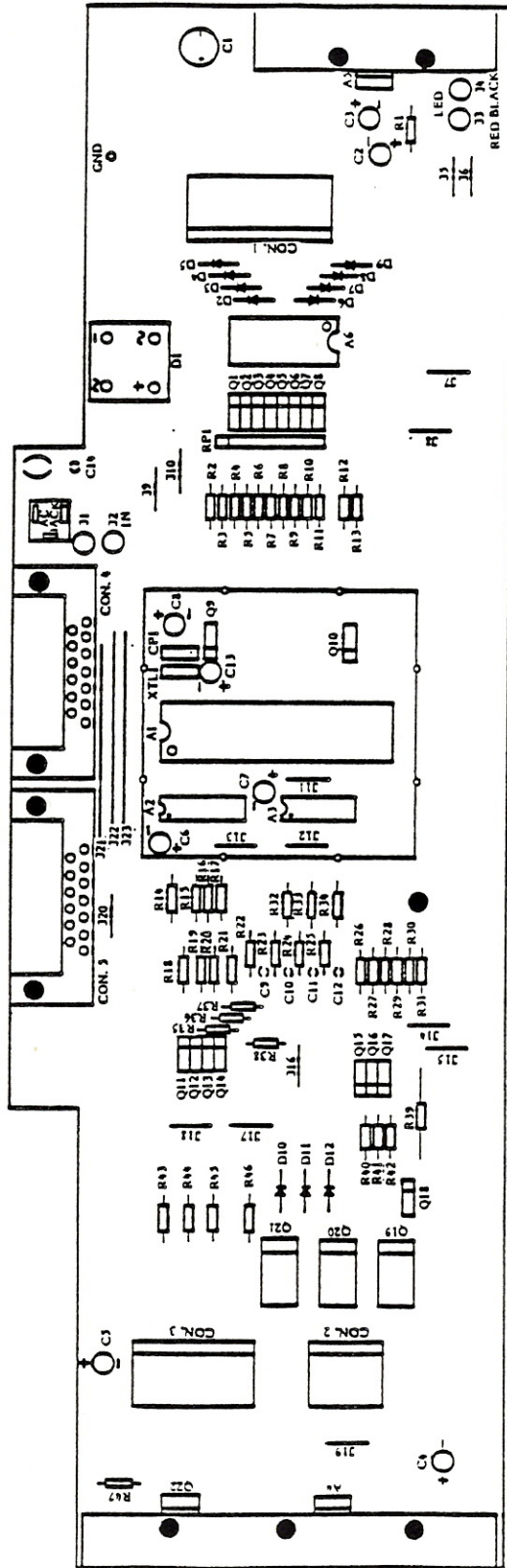


Figure 5-2. 1027 Printer Silkscreen

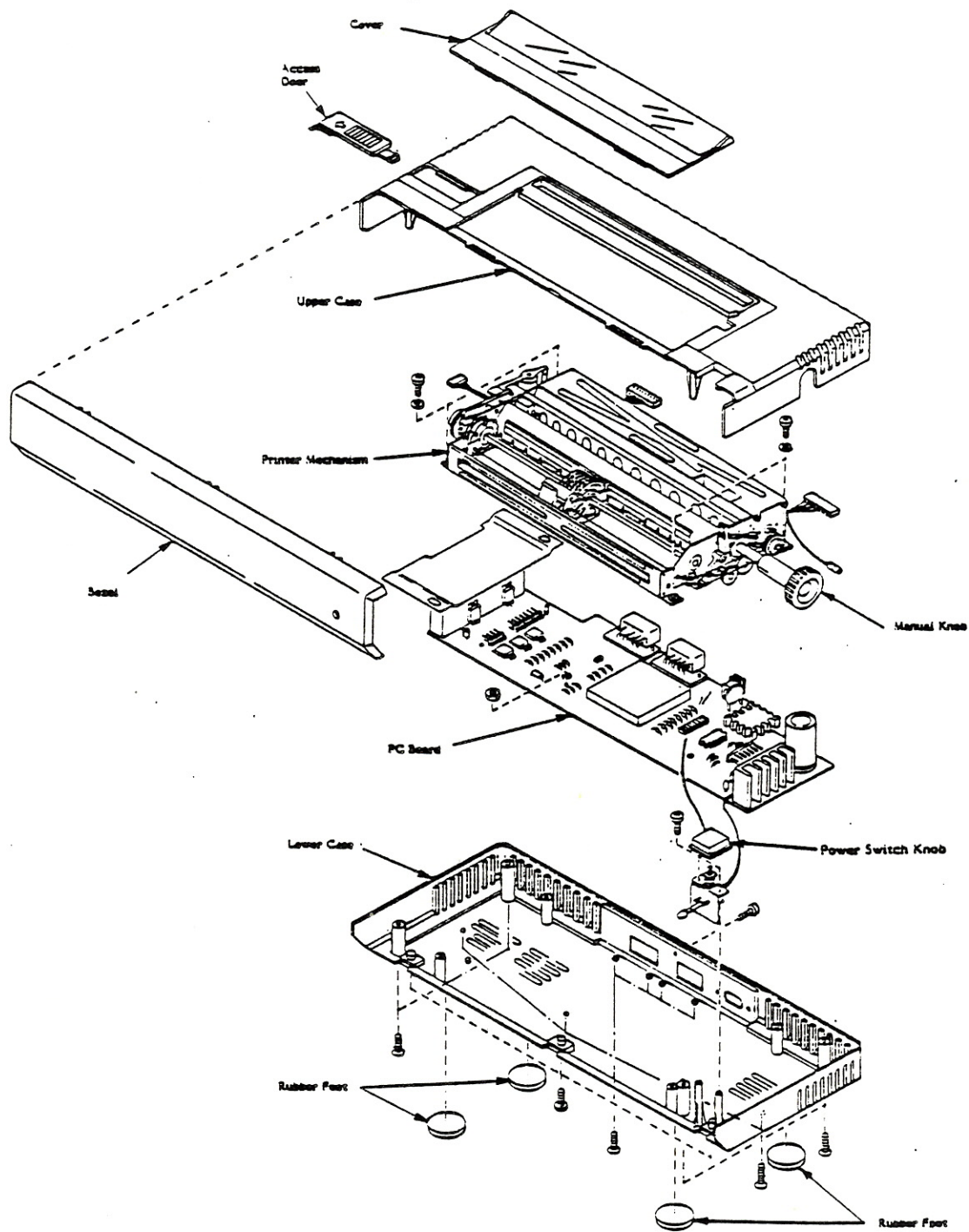


Figure 5-3. 1027 Printer Final Assembly

This Page Intentionally Left Blank





This Page Intentionally Left Blank

## PARTS LIST

<u>Item</u>	<u>Location</u>	<u>Description</u>	<u>Part Number</u>
1	A4	Volt. Reg., 17806P	FC100611
2	A5	Volt. Reg., 17805P	FC100612
3		Knob, Manual	FC100613
4		Case, Upper	FC100614
5		Case, Lower	FC100615
6		Bezel	FC100616
7		Cover	FC100617
8		Knob, Power Switch	FC100618
9	A1	I.C., 8049, MPU	FC100619
10		Subassy, PCB	FA100620
11		Subassy, Power Switch, LED	FA100621
12		Subassy, Printer Mech	FA100622
13	ADP	Adaptor, AC	FC100623
14	I/O	Cable, I/O	FC100624
15	IR2	Roll, Ink	FC100626
16	C1	Cap., 25V, 15000uF	FC100627
17	D1	Rectifier	FC100628
18	A2	I.C., 14050, Hex Buffer	FC100629
19	A6	Array, Transistor, LB1259	FC100630
20	XTL1	Crystal, 6 MHz	FC100631
21	A3	I.C., 74LS09, Quad	FC100632

## SECTION 6

### SERVICE BULLETINS

This section is to be used by you to file the three classifications of service bulletins that are periodically released by the Director of Technical Support.

The following are brief descriptions of each classification:

#### FIELD CHANGE ORDER

A Field Change Order describes mandatory hardware or software changes to ATARI products and instructs how to implement these changes. The changes must be performed on all units serviced or repaired.

#### UPGRADE BULLETIN

An Upgrade Bulletin describes product improvements or modifications that the consumer may wish to purchase. These bulletins allow you to modify the customer's unit to add capabilities which may not have been available when the unit was originally manufactured.

#### TECH TIP

A Tech Tip is a document of a general nature which transmits routine service or repair information. By communicating methods developed since you attended training classes, Tech Tips aid to continuously improve repair skills and increase knowledge of ATARI products.

Other times, Tech Tips alert you to units that have been modified and are now standard for ATARI Manufacturing, but are different from many existing units and require different repair techniques.